



2020

COMMERCIAL FISHING SOLUTIONS



**Raymarine®**





Demanding work requires the best equipment. Equipment you can rely on to withstand the elements. Equipment to get you to the fishing grounds and home safely. Equipment that puts you on the fish without losing valuable time. If you're looking for marine electronics that work as hard as you do, you're looking for Raymarine.

Raymarine is a world leader in marine electronics with a rich history. Since introducing the world's first electric depth sounder in 1924, Raymarine has developed and delivered the electronics onboard thousands of working boats around the world.

Stem to stern, Raymarine offers a comprehensive suite of sonar, radar, navigation, and accessories for commercial fishing vessels.



## AXIOM PRO RVX

### MULTIFUNCTION DISPLAYS

---

Demanding Captains want rugged, reliable gear that is easy to use. Powered by our LightHouse 3 operating system, Axiom Pro is smartphone simple. HybridTouch technology gives full access to the system, gloved or ungloved and offers superior control in rough seas.

Axiom Pro's aluminium chassis and glass display panel are built to withstand the most extreme weather nature can dish out. Plus, Axiom Pro is available in 9, 12 or 16-inch sizes with super-bright screens and wide viewing angles.

#### Key Axiom Features:

- Built in 2D, 3D, DownVision and SideVision Sonar
- Built-in 1kW CHIRP sonar for deep water fishing
- Seamless integration with Raymarine scanners, sensors and FLIR cameras







## SERIOUS RADAR

FOR MARINE PROFESSIONALS



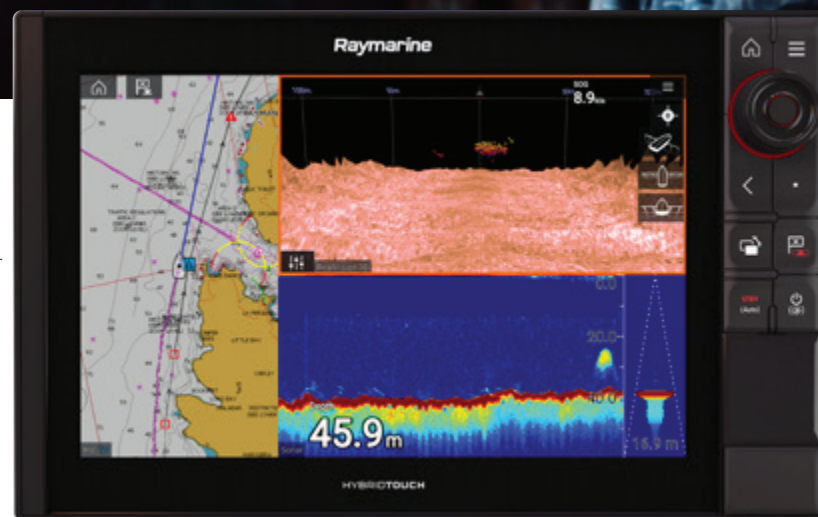
When you fish for a living darkness, fog and foul weather are all part of the job. Having a rugged, reliable radar onboard not only keeps you working, but also keeps you and your crew safe too. Every Raymarine radar comes standard with fully automatic tuning and weather controls, ARPA/MARPA integration, and radar-on-chart overlay.

Quantum CHIRP radars are the perfect choice for smaller vessels needing a compact, lightweight system with high performance and crisp detail. Available Doppler Target tracking enhances situational awareness by colourising inbound targets red and outbound targets green.

Magnum Open-Array radars offer powerful 4kW or 12kW transmitters with a maximum range of 96-miles. 4-foot or 6-foot antennas give Magnum radars exceptional coastal detail and target separation. Magnum supports advanced features like dual-range scanning, high-speed 48 RPM rotation, and bird detection mode.

## HIGH-POWER CHIRP SONAR SOLUTIONS

When only the best will do, choose the CP570 Professional CHIRP sonar featuring dual channels and dual 2kW transceivers for fastest update and maximum detail in deep water.



## RAY90 MODULAR VHF RADIO

Flexible, expandable and dependable are the three characteristics that define the Ray 90 modular VHF radio system. Its black-box configuration saves precious space at the helm and offers multi-station convenience.

Connect up to 2 wired and 3 wireless handset stations. Ray 90 also has a powerful 30-watt loudhailer output for automatic fog signalling and public address.







## FLIR MARINE THERMAL

### CAMERAS FOR COMMERCIAL FISHING

The latest generation of FLIR M300 Series marine cameras are available with HD visible and infrared thermal cameras for incredible day and night capability. Visible cameras come standard with a 30x optical zoom for superior long-range performance. Dual-payload cameras feature FLIR-exclusive Colour Thermal Vision technology, which enhances thermal night vision

with vital colour elements for positive identification of navigation lights, buoys, and aids-to-navigation. Every FLIR M300 Series camera is gyro-stabilized for smooth viewing in rough weather and supports ClearCruise object detection, which picks out and highlights non-water objects in the camera's field of view.



## AUTOMATIC IDENTIFICATION SYSTEM

### ( A I S )

Class A and Class B AIS systems from Raymarine enhance your situational awareness in busy waterways, prevent collisions at sea, and keep you in compliance with the latest carriage requirements. Our AIS700

Class-B transceiver is compact, simple to install, and uses the latest SO-TDMA networking technology for longer range and faster performance.



## AUTOPILOT SYSTEMS

FOR ANY BOAT



Evolution autopilot systems from Raymarine are available for just about any boat and engine configuration. Using the revolutionary EV-1 heading system, Evolution systems are true learning autopilots that evolve and adapt to your boat and the changing sea conditions. Hydraulic or mechanical steering, Raymarine has you covered.

The EV300 Autopilot for solenoid-controlled steering is ready to install on many types of commercial fishing vessels with electro-hydraulic steering and offers precise course-keeping and seamless integration with Axiom Pro.



The Follow-On Tiller controller accessory works with any Evolution autopilot system and brings fully functional power steering to remote and secondary control stations anywhere onboard. Engineered for extreme weather, hard use, and long life, the compact tiller control is right at home at bridge wing stations, aft control stations, or even right in the arm of your pilothouse helm chair.



**FLIR Maritime Belgium Bvba**

Luxemburgstraat 2,  
2321 Meer,  
Belgium  
T: (+32) (0) 3665 5162

**Raymarine UK Limited**

Marine House  
Cartwright Drive, Fareham, PO15 5RJ,  
United Kingdom  
T: (+44) (0)1329 246 700

**FLIR Maritime US Inc.**

9 Townsend West  
Nashua NH 03063  
United States of America  
T: (+1) 603-324-7900

**FLIR Maritime Asia Pty Ltd**

Suite 1.01, 26 Rodborough Road  
Frenchs Forest, NSW, 2086,  
Australia  
T: (+61) (0) 2 8977 0300

**Raymarine Benelux**

Florijnweg 21G,  
6883 JN VELD  
Nederland  
T: (+31) 26 361 4242

**Raymarine Denmark**

Centervej 7  
4600 Køge  
Denmark  
T: (+45) 4371 6464

**Raymarine Finland Oy**

Suomalaistentie 1-3  
02270 Espoo  
Finland  
T: (+358) 207619937

**Raymarine France**

Parc d'Activités des Peupliers  
37 Rue des Peupliers, CS 50007  
92752 Nanterre Cedex - France  
T: (+33) 146497230

**Raymarine Germany GmbH**

Borsteler Chaussee 53,  
22453 Hamburg,  
Germany  
T: (+49) 40 237 8080

**Raymarine Italy Srl**

Via L. Manara 2,  
20812 Limbiate (MB),  
Italy  
T: (+39) (0)2 99451001

**Raymarine Norway**

Stasjonsveien 19  
1580, Rygge,  
Norge  
T: (+47) 69 26 46 00

**Raymarine Sweden AB**

Bolshedens Industriväg 18,  
427 50 Billdal,  
Sweden  
T: (+46) 317 633670

**CONTENT NOTE**

The technical and graphical information contained in this brochure, to the best of our knowledge, was correct as it went to press. However, the Raymarine policy of continuous improvement and updating may change product specifications without prior notice. Therefore, unavoidable differences between the product and this brochure may occur from time to time, for which liability cannot be accepted by Raymarine. Some images in this brochure have been used for illustration purposes only.

**EXPORT RESTRICTIONS**

The information contained in this brochure pertains to dual use products controlled for export by the Export Administration Regulations (EAR). Diversion contrary to US law is prohibited. US Department of Commerce authorization is not required prior to export or transfer to foreign persons or parties unless otherwise prohibited.